

Your contact person:

Kerschensteiner- und Paternus GS

Melanie Wilding

Mobile: 0151/72074654

E-Mail: melanie.wilding@worms.de

Pestalozzi-, Rheindürkheimer und Wiesoppenheimer GS

Darleen Burgey

Mobile: 0151/72940117

E-Mail: darleen.burgey@worms.de

Ernst-Ludwig- und Wiesengrund GS

Julia Hintze

Mobile: 0151/72069274

E-Mail: julia.hintze@worms.de

Staudinger-, Diesterweg- und Montessori GS

Kaija Leuz

Mobile: 0151/72082165

E-Mail: kaija.leuz@worms.de

Neusatz- und Westend GS

Dorothea Trieb

Mobile: 0151/72061594

E-Mail: dorothea.trieb@worms.de

Karmeliter- Dalberg- und Klausenberg GS

Kerstin Wallrabenstein-Sonnenberg

Mobile: 0151/72069065

E-Mail: kerstin.wallrabenstein-sonnenberg@worms.de

Publisher:

Stadtverwaltung (city administration of Worms

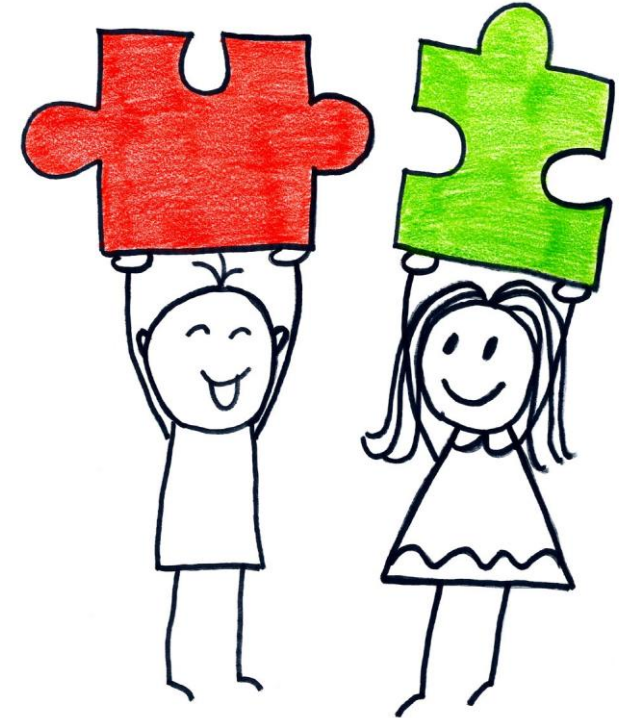
Bereich 5.02 Prävention und Soziale Dienste
(Area 5.02 Prevention and social services)

Schönauer Str. 2
67547 Worms

Tel: 06241/853-5555

Fax: 06241/853-5599

Social Work at primary schools



Who we are ...

The specialist service of **social work at primary schools** belongs to the city of Worms and is responsible for all primary schools in Worms. Our team consists of specialists in social work and pedagogy. We provide solution- and resource-oriented advice in close cooperation with everyone involved.

Our advice is voluntary, confidential and free of charge.

TOGETHER
we can do it!



Our offer ...

... is aimed at parents, children and teachers.

The **aim** of our work is to support children in their academic, social, personal and emotional development.

We give advice and support you, if...

- ▶ You as a parent and/or your child feel burdened by school requirements
- ▶ Your child has problems following lessons
- ▶ Completing homework becomes a daily challenge
- ▶ Your child shows developmental or behavioral problems
- ▶ There are often conflicts between children at school
- ▶ Your child does not like going to school
- ▶ Your child finds it difficult to fit in with the class or feels excluded
- ▶ You have questions about raising your child
- ▶ Parents want to submit an application for assumption of costs for learning therapy (according to §35a, SGB VIII) for LRS, dyslexia or dyscalculia



Prevention

Cooperation

Integration

Communication

Voluntary

Individuality

Development

Appreciation